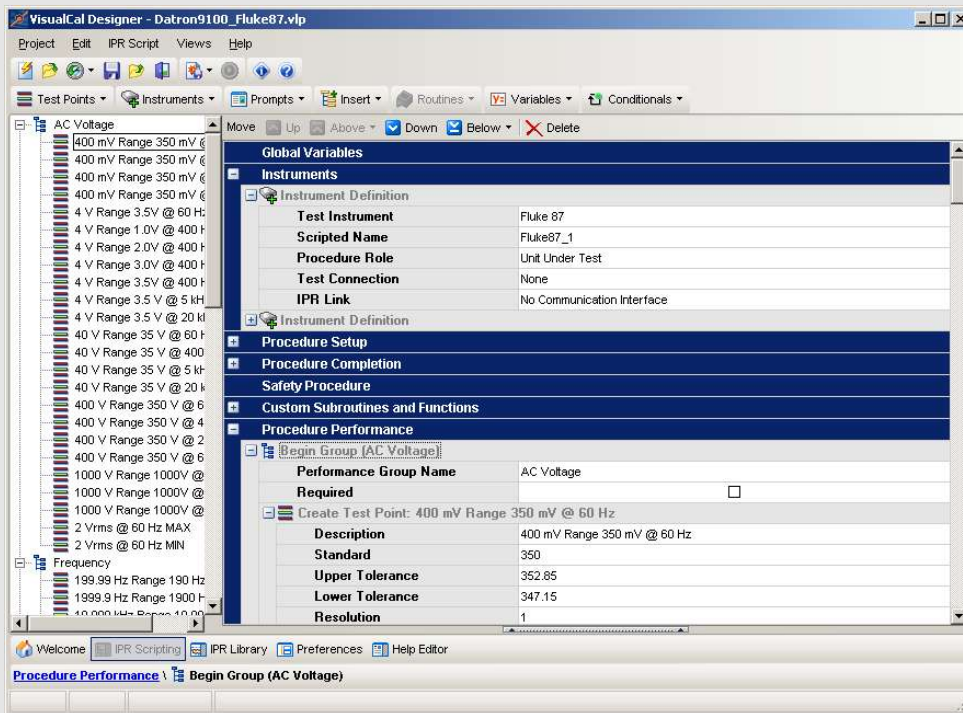


VisualCal Automated Calibration Development



- Unique Single-Window Interface
- Click and Build Interface
- Nearly Unlimited Instrument Support
- Integrated RTF Help Editor
- Multimedia Support
- Multi-Pass Capable
- Test Point Group Enforcement
- Integration with Gage InSite/CLE
- Mix and Match Instruments/Interfaces
- Little to No Programming Required
- Quick-Jump Navigation Features
- Visual Script Block Collapse
- Pre-Flight Command Checker
- Round-Trip Command Editor
- Custom Auto-Complete Lists
- Unlimited Variable Support

About VisualCal

VisualCal represents the next generation of calibration automation development software. With a strong emphasis on removing the 'programming' aspect inherent in many of today's applications, VisualCal takes a different approach by providing technicians with a system that shifts its user interface depending on the tasks the procedure can or cannot perform-- with respect to their place in the procedure. All of this takes place in a state-of-the-art singular window interface. No more floating windows jockeying for position-- everything you need is right in front of you, or one click away. Couple that with a unique click-and-build methodology and VisualCal allows a technician to produce procedures the way he/she thinks... as a metrologist... not as a programmer.

This doesn't mean that VisualCal isn't powerful. Beneath this simple user interface is a very robust scripting engine capable of just about anything imaginable. As your level of experience with VisualCal grows, you will find new tools and techniques to take your procedure development even farther than before. There is no need to start off facing a steep learning curve, as most of the common tasks have been wrapped up in the click-and-build interface.

When it comes to instrument support, VisualCal reigns supreme. You are not limited by the software. VisualCal provides an Instrument Profile library that can be expanded at any time to include commands for any programmable instrument available. Why wait on upgrades or vendors to come around to support your devices, even if they aren't the latest and greatest models?

“VisualCal allows procedure writers to think in terms of a metrologist, not a programmer.”

System Requirements

Specifications subject to change.

Windows 98SE/2000/XP or greater
P3 Class Machine or equivalent
256 Megs of RAM
150 Megabytes of disc space

Device Compatibility

NI 488.2

Lab customers view equipment records, calibration results, invoice

RS232

Lab customers view equipment records, calibration results, invo

Manual Devices

Lab customers view equipment records, calibration results,

Contact IndySoft Corporation

IndySoft Corporation
1200 Woodruff Road
Suite H-11
Greenville, SC 29607

phone: 864 627-8858
fax: 603 754-9531

website: www.indysoft.com
email: sales@indysoft.com

Just a Partial List of Popular Features...

Little to No Programming Experience Required

VisualCal provides you with a no-nonsense click-and-build environment and instrument commands that use common terminology. Forget cross-referencing manuals to find the right command for your device-- it's right there in the interface in a language you can easily understand.

User-Expandable Instrument Support

While other procedure development systems are 'hard-coded' to support a limited number of devices, VisualCal breaks through this limitation by allowing you to expand the supported instrument base at any time through the Instrument Profile Library. No matter how old or new the device, you can create an Instrument Profile for anything with IEEE or RS232 communication capabilities.

Separate Designer vs Player Licensing

Why pay the same amount for your procedure writer/runtime when all you need is to run the scripts? Only IndySoft allows you to purchase runtime-only licenses for your technicians, radically lowering your cost of deployment. With the purchase of your designer you also get one player license for free, so you can test your cutting-edge procedures before deployment.

Mix & Match Nearly Unlimited Instruments and Interfaces in Procedures

Need to use four devices in a procedure? How about five or even more? VisualCal allows you to incorporate nearly unlimited devices, in any communication configuration, into a single procedure, all under instrument control. For instance, you can place three instruments on the one or more GPIB interfaces, and two others on RS232, and control them all in the same manner.

Multimedia Support

When you need to instruct the technician on setup or configuration of a device you can add images, video or text prompts to your procedure. You also have a full fledged RTF help editor at your disposal for more complicated instructions. The RTF control allows full text layout and even supports copy and paste from Word documents.

"Guided" Usability Interface

While many applications throw everything and the kitchen sink into their user interfaces, VisualCal supplies you with a 'what you see is what you need' approach to the user interface. Editor panels slide away, toolbars hide or become disabled, relative to your current task at hand, so there is no risk or guesswork in selecting what you can do next.

Selective Test Point Group Performance

VisualCal allows you to require specific test point groups that must be performed in a procedure. Further, the technician can select test point groups to skip on calibration, and those groups are 'locked out' for subsequent passes.

Multi-Pass Capable

Say goodbye to generating two certificates of calibration for your as-found and as-left results. VisualCal supports multiple passes of the calibration procedure and stores the results from each pass.

Compatible with Gage InSite

VisualCal procedures can be distributed to your Gage InSite Enterprise or CLE environment. When you select the Calibration event from InSite, your VisualCal procedure launches, and upon completion, your test points are automatically transferred to the Gage InSite test points grid.

IndySoft Corporation's development team has been providing quality calibration management solutions for over 10 years. Serving over 75 Fortune 500 companies, our customer base spans the world with installations ranging from small calibration labs to full enterprise corporate solutions.

Companies choose IndySoft Corporation because of our extensive technological agility and commitment to increasing the flexibility and usability of calibration management software products. Companies stay with IndySoft Corporation because of our commitment to them.

Additional InSite Products

Gage InSite Enterprise

Calibration management and asset tracking with process modeling, custom reporting and more.

Gage InSite CLE

All the same features as Gage InSite Enterprise, except with the inclusion of Invoicing and an advanced Work Order System.

Tool InSite

Full support of tool tracking, kitting, and consumables for even the most demanding of environments.

InSite Application Server

Extends the reach of your network by allowing remote access to your core database from anywhere there's an Internet connection.

InSite DataView Browser Edition

Lab customers view equipment records, calibration results, invoicing and more, over the internet using a web browser.

CalRover - PocketPC Calibration

Mobile technicians record calibration results with a handheld PocketPC, allowing them to print certificates & stickers, then synchronize data back with the main lab.

InSite Uncertainty Module

Tracks total uncertainty for all calibrations while technicians continue their normal duties, at the same time providing a per-test-point calculated uncertainty.

MetCAL Import Module

Launches MetCAL procedures from Gage InSite/CLE and auto-imports calibration results.

Temp/RH Import Module

Performs automated temperature and relative humidity readings from Rotronic's Hygroflex or Veriteq's Spectrum Analyzer data loggers.

Find more solutions by visiting the company homepage at <http://www.indysoft.com>